



# XTerm for Pocket PC V2 *(Communicates with XLite & Xpert Dataloggers)*

## Pocket PC Software for Real-Time Data Access, Set-Up, & Downloads

### Features

- Same functionality as XTerm for desktop PC (except for SSP diagnostics and non direct-serial connections)
- Compatible with all Xperts (8080-) and all XLites (9210)
- View & manipulate logger graphical display for system set-up
- Download logs
- Upgrade firmware
- Transfer files between the logger & your Pocket PC

### Installing XTermPPC

- XTerm is installed by executing the installation program on your PC while it is connected to the Pocket PC device. Your PC must have Microsoft ActiveSync installed. If you do not have ActiveSync yet, it can be downloaded from <link to

<http://www.microsoft.com/windowsmobile/downloads>

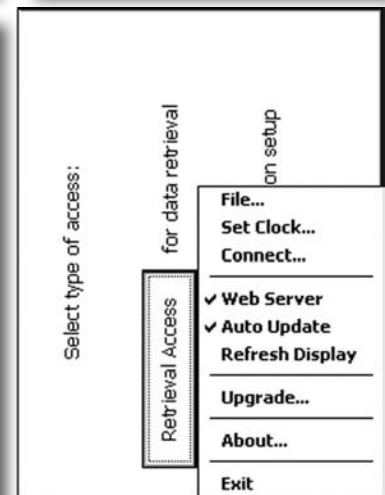
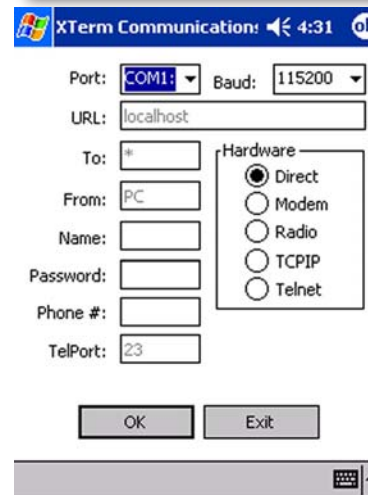
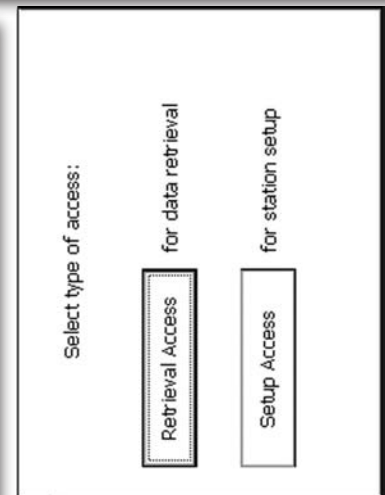
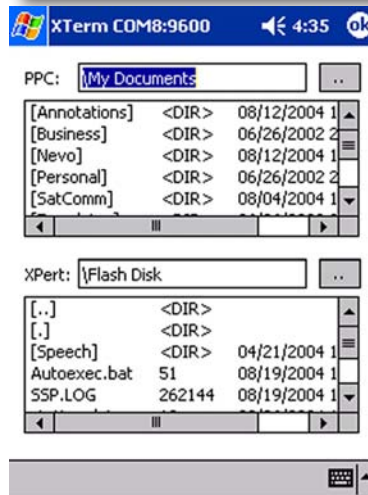
- Before installing XTerm, you need to know which version of the Windows CE (WCE) operating system your Pocket PC device contains. You can determine the WCE version from Settings – System – About, where you will see something like “Version x.xx” (your version string may contain more numbers than x.xx, *but it is these first two that are important*). The version number is needed to know which file to download and install.
- Uninstall XTerm if it is currently installed (Settings – System – Remove Programs).
- For WCE 4.xx, download and execute XTermPPC2003Setup.exe.
- For WCE 2.xx or 3.xx, download and execute XTermPPC2002Setup.exe.

### Tested Platforms

XTerm has been tested on the following Pocket PC platforms and accessories:

- HP iPaq 2215
- HP iPaq 4155
- HP iPaq 5455
- Socket Cordless Serial Adapter (Bluetooth dongle)
- Socket Compact Flash Serial I/O Card
- Quatech Compact Flash Serial I/O Card (CF232-R)

**New with Version 2.0 - XTerm is fully compatible with Windows Mobile 2003 (WCE Versions 4.0 & 4.2)!**



### Using XTermPPC

- Directions for using XTermPPC can be found in <link to Xpert or 9210 User Manual>.