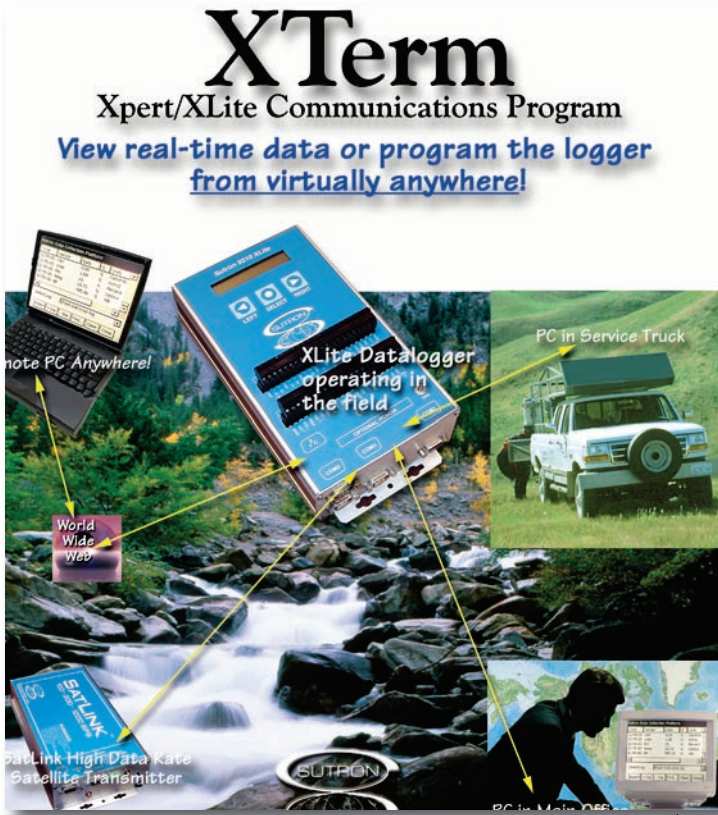


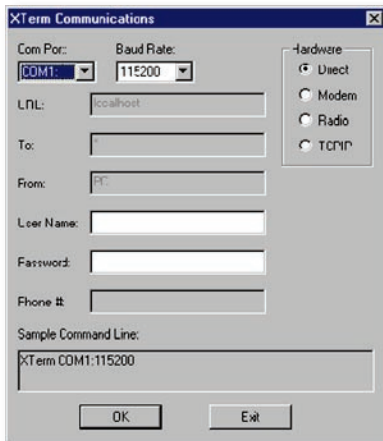
XTerm Communications Program



Sutron's XTerm communications program allows any PC to remotely setup and operate an Xpert or XLite - without using a front panel.

No special installation is needed for XTerm. Simply copy it to any folder on your PC. When you run XTerm, you will see this screen:

Use the controls on the screen to select the com port, baud rate, type of hardware (direct, modem, radio, TCP/IP) and related values. Then select OK and Xterm will begin operation with the type of communications you have selected.



Applications

- ✓ Automatic Weather Station
- ✓ Agricultural/AgMet Station
- ✓ Synoptic Weather Stations
- ✓ AWOS Stations
- ✓ Tidal Stations
- ✓ Hydromet Stations
- ✓ Fire Weather Station
- ✓ Water Level Station
- ✓ Water Level/Rainfall Station
- ✓ Gate Control Station
- ✓ Water Distribution Control Station
- ✓ Stream Gauging
- ✓ Irrigation Control Station
- ✓ Your Application!

Features

- ✓ Remote operation of XPert or XLite
- ✓ Automatically displays the graphic display of the XPert or XLite
- ✓ Sends mouse clicks to the XPert or XLite as if you were pressing the touch screen
- ✓ Easy file transfer to allow uploading and downloading of setups, programs, and data files
- ✓ Set the clock of the XPert or XLite with a single button
- ✓ Export logged recordings to your PC
- ✓ Communicate to an XPert or XLite via RS232 com ports 1-9 at up to 115200 baud.
- ✓ Supports Direct Connect, Hayes (TM) style Modems, and Keyed Half Duplex Radio Systems
- ✓ Communicate to an XPert or XLite via a TCP/IP network.
- ✓ Communicate over the internet by using XTerm as a proxy
- ✓ Automatically prompts for login account and password when needed.
- ✓ Display system information regarding running processes, threads, and memory usage

