

Real-Time Data from the Field to your Desktop

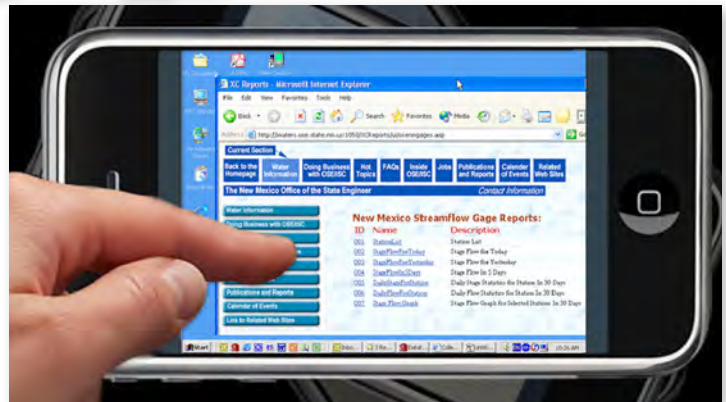
XConnect Software 9300-0000

Turn-Key Solutions for Today's & Tomorrow's Applications

- ▶ Data collection, data processing, data validation & data storage with multiple options
- ▶ Running Windows®, it handles any & all RTU communications - simple to satellite - with instant desktop supervisory control (SCADA) & data access.
- ▶ Unlimited Reporting Products & Alarms including data view, graphs, trending, diagnostics, etc.
- ▶ Easy implementation & integration of future applications & existing system upgrades without the need for consulting dependency.

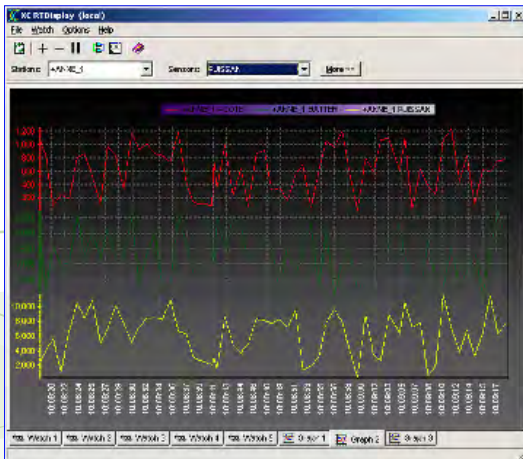
Solidly built on cutting edge relational database architecture, XConnect puts data at your fingertips & provides the most powerful open system available for data collection, data processing & data storage.

For 35 years Sutron has specialized in collecting & delivering remote data in your specified format because it's not real-time if you have to wait to use it.



Features

- Customer-designed hydro-met data collection at a fraction of the cost of in-house or alternative solutions. You save critical capital upfront & reduce support & expansion costs.
- Automated communications from PC server to all RTUs, no matter how remote
- Flexible & scalable relational database with multiple storage formats: PCBase2 Binary files, ODBC (Oracle®, Microsoft® Access), ASCII day files, and Microsoft® Excel, XML
- Unlimited Reporting Products & Alarms including graphs, trending, diagnostics, etc.
- Real-time error detection flags - supports multiple alarm detection thresholds plus "no change" checks (e-mail & paging notification available)
- Real-time data processing (including table lookups) prior to data storage
- Instant Implementation reduces connection time & expense & immediate improvement of data flow process
- Runs on any Windows device with no additional configuration
- Unlimited Expandability
- Demonstrated project success
- Quality Flags - Supports 2 alarm detection thresholds plus "no change" checks.
- Historical data tables with automated calculation & statistics storage - MIN, MAX, SUM, MEAN...
- Communications diagnostics tools
- Optional satellite message decoder module & utilities.
- Allows 3rd party software link. DDE protocol maintained.
- Flexible Time Tags - can be set to the second.
- Continued field & software support long after the solution is



XConnect Real-Time Trend Display



SUTRON CORPORATION

22400 Davis Drive : Sterling, VA 20164 : (703) 406-2800
 GS-25F604D SBSA : NESDIS Certified : ISO Certified

launched. (703) 406-2801 Fax : www.sutron.com : sales@sutron.com : page 1
 EUMETSAT Certified : CE Certified : INSAT Certified : 4/7/2011

XConnect Enhances Efficiency & Accuracy and Reduces Costs

XConnect Software

9300-0000

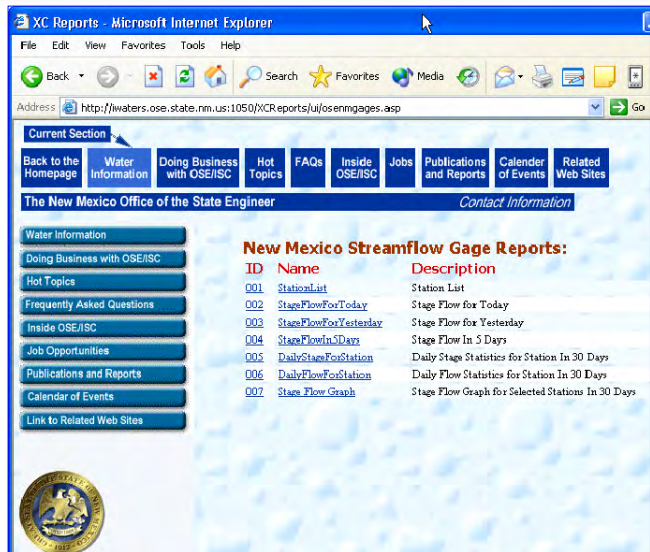


System Functions

- ▶ Setup of stations, sensors, data groups
- ▶ Polling schedule (radio, phone systems)
- ▶ Real-time processing setup (tables, equations)
- ▶ Communications parameters
- ▶ Real-time status of data collection
- ▶ Interactive tools to aid in sensor configuration
- ▶ Interactive Graphics
- ▶ Access to database station and sensor characteristics
- ▶ Standard Reports (hour, day, week, month, year)
- ▶ Post processing setup (optional)
- ▶ GOES decoding (optional)
- ▶ Data export (optional)

Features

- ▶ Demonstrated project success
- ▶ Quality Flags - Supports 2 alarm detection thresholds plus "no change" checks.
- ▶ Historical data tables with automated calculation & statistics storage - MIN, MAX, SUM, MEAN...
- ▶ Communications diagnostics tools
- ▶ Optional satellite message decoder module & utilities.
- ▶ Allows 3rd party software link. DDE protocol maintained.
- ▶ Flexible Time Tags - can be set to the second.
- ▶ Continued field & software support long after the solution is launched.



Data Hosting

Not ready to implement a data collection network on your own? Sutron can collect, decode, archive and deliver your data to you. Or would you prefer that we post your data to the web? Trust Sutron to install and operate your data collection network.

We provide all the Hardware. We activate the Modems/ Satellite Equipment. Real-Time Data Distribution seamlessly to a PC, iPhone, PDA &/or Blackberry. We provide a customized Web-Page with Google Map or Static Map Showing Sites. We also provide Limit Checking & Alarm Notification via SMS or E-Mail.



SUTRON CORPORATION

22400 Davis Drive : Sterling, VA 20164 : (703) 406-2800 : (703) 406-2801 Fax : www.sutron.com : sales@sutron.com : page 2
 GS-25F604D SBSA : NESDIS Certified : ISO Certified : EUMETSAT Certified : CE Certified : INSAT Certified : 4/7/2011

Keep ahead of the Elements & Apace with Today's Rapidly Changing Technology
with an XConnect Maintenance Plan.

XConnect Software - Product Packages

9300-0000

XCONNECT STANDARD

XConnect Standard represents the baseline XConnect package for a conventional hydro-met system. A conventional system is one that uses telephones, radios, or direct connect cable communications. Conventional systems are two-way systems wherein XConnect sends a data request to the datalogger and the datalogger replies.

Programs Included	Data Storage Options
XC Desktop	PCBase2
XC Setup	Binary Files
XC Rtu	ASCII Log Files
XC RTDisplay	Excel Files
XC Dataview	XML Fi
XConnect Standard	#9300-0000-1

XCONNECT SATELLITE

XConnect Satellite is designed for systems that use satellite communications (SatLink Transmitter or other GOES Satellite transmitter). Currently satellite systems are only one-way systems in which XConnect communicates with a digital direct readout ground station (DDRGS)/receive site multiplexor to receive satellite messages.

Programs Included	Data Storage Options
XC Desktop	PCBase2
XC Setup	Binary Files
XC Mux	ASCII Log Files
XC Decode	Excel Files
XC Daps	XML Files
XC RTDisplay	
XC DataView	
XConnect Satellite	#9300-0001-1

XCONNECT STANDARD WITH DATABASE

XConnect Standard with Database includes all of XConnect Standard and expands the data storage options to include databases (Oracle® and MS Access®). Additional modules are included to assist the user in viewing and manipulating the data.

Programs Included	Data Storage Options
XC Desktop	PCBase2
XC Setup	Binary Files
XC Rtu	ASCII Log Files
XC RTDisplay	Excel Files
XC DataView	XML Files
XC Reports	Oracle®
XC PostProc	MS Access®
XC Calc	
XConnect Standard with Database	#9300-0000-2

XCONNECT SATELLITE WITH DATABASE

XConnect Satellite with Database includes all programs and data storage options included in XConnect Satellite and expands the data storage options to include databases (Oracle® and MS Access®). Additional modules are included to assist the user in viewing and manipulating the data.

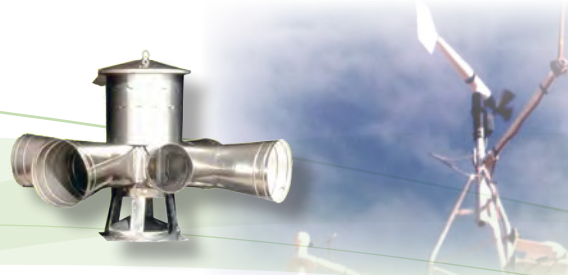
Programs Included	Data Storage Options
XC Desktop	PCBase2
XC Setup	Binary Files
XC Mux	ASCII Log Files
XC Decode	Excel Files
XC Daps	XML Files
XC RTDisplay	Oracle®
XC DataView	MS Access®
XC Reports	
XC PostProc	
XC Calc	
XConnect Satellite with Database	#9300-0001-2

XCONNECT TOOLKIT

XConnect Toolkit includes add-on utilities.

Utilities Included
XC Export
XC Alarm

XConnect Toolkit	#9300-0002-1
-------------------------	---------------------

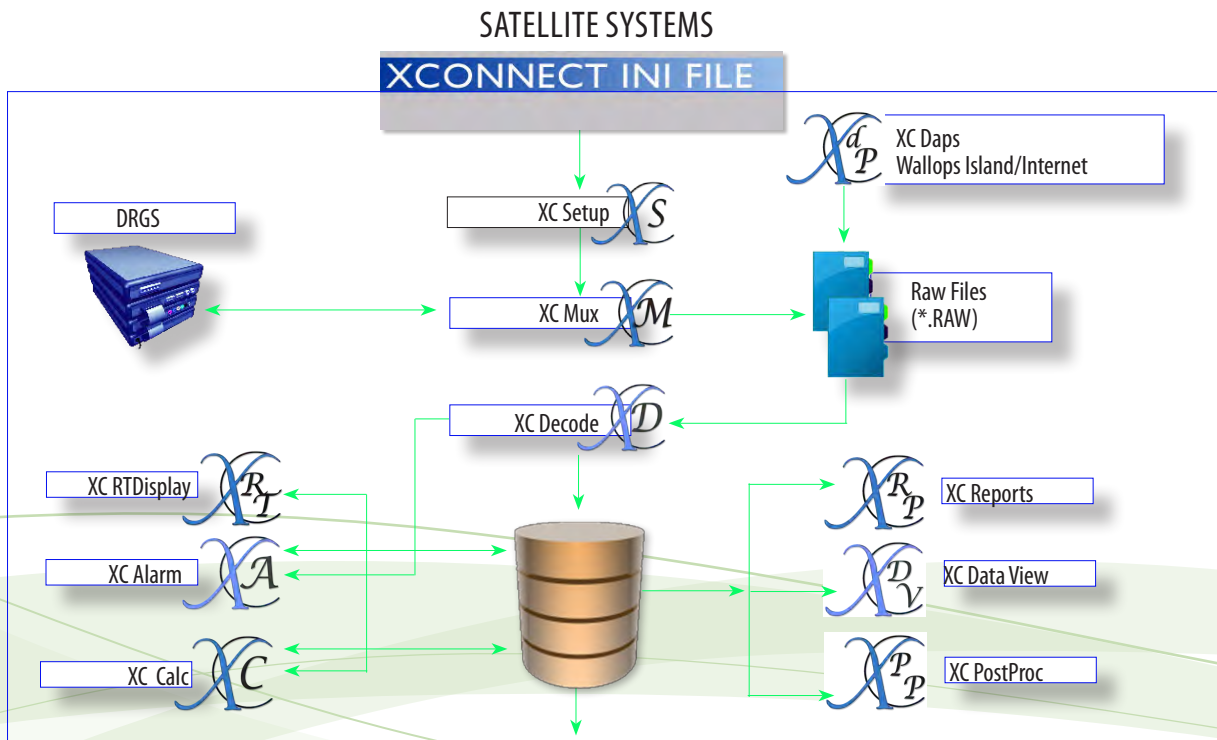
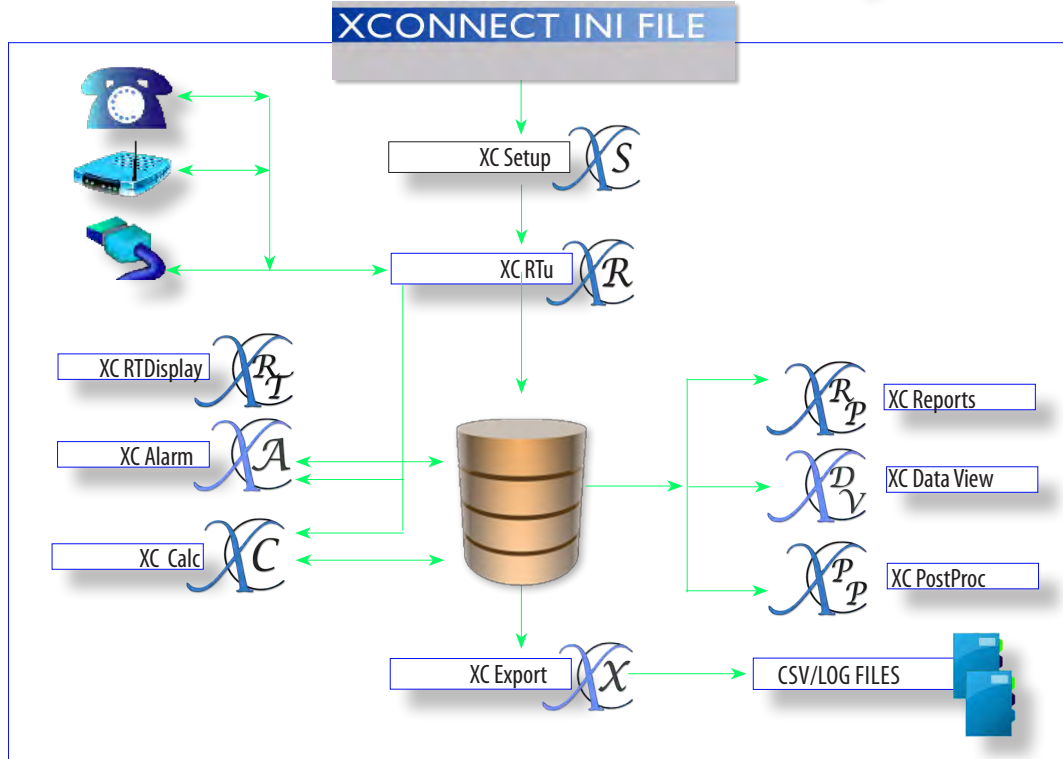


SUTRON CORPORATION

22400 Davis Drive : Sterling, VA 20164 : (703) 406-2800 : (703) 406-2801 Fax : www.sutron.com : sales@sutron.com : page 3
 GS-25F604D SBSA : NESDIS Certified : ISO Certified : EUMETSAT Certified : CE Certified : INSAT Certified : 4/7/2011

XConnect Software

Dataflow for Conventional Systems & Satellite Systems



SUTRON CORPORATION

22400 Davis Drive · Sterling, VA 20164 · (703) 406-2800 · (703) 406-2801 Fax · www.sutron.com · sales@sutron.com · page 4
 GS-25F604D SBSA · NESDIS Certified · ISO Certified · EUMETSAT Certified · CE Certified · INSAT Certified · 4/7/2011

Real time data when you need it, where you need it, & in your specified format!

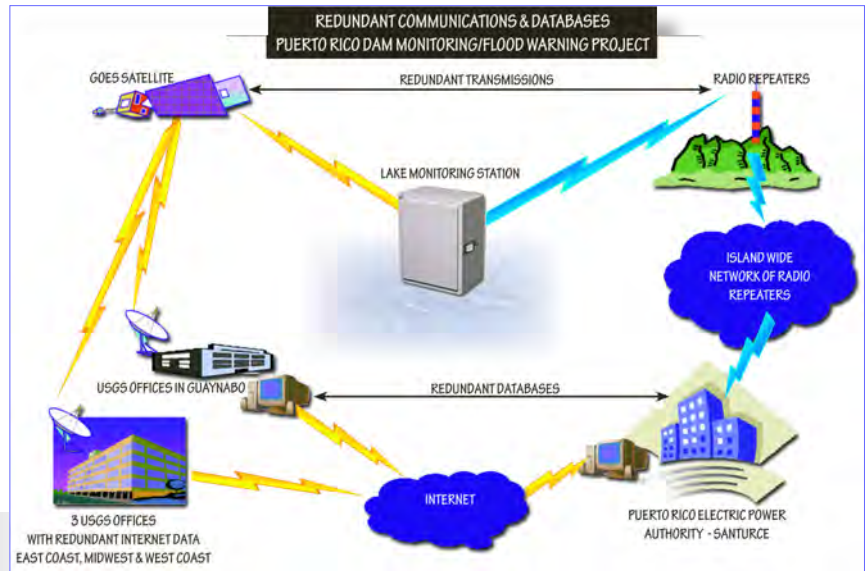
XConnect Software

Web & Data Hosting: DCP to Desktop

Outsource Your Data Collection

Not ready to implement a data collection network on your own?

Sutron can collect, decode, archive and deliver your data to you or post to the web; or install and operate your data collection network.



OBJECTIVE

1. Create dynamic web pages.
2. Accept user inputs including date, time, range, station and sensor
3. Customize the data format in tables

SOFTWARE REQUIREMENTS

1. Windows 2000 Server with Internet Information Server (IIS)
2. XConnect with Database Option – Purchased separately by Customer
3. For Access MDB, no additional license required. For Oracle or SQL-Server, database is supplied by customer.

The user supplies, prepares and configures a Windows 2000 Server (with a Service Pack 4 or later) and IIS. The Windows 2000 Server can be a stand-alone server or part of a domain. TCP/IP protocol must be installed and configured. The IIS must have FrontPage 2000 Server Extension (installed by default). IIS is configured with application isolation level to high. A virtual directory will be created and point to the actual web application directory.

Other runtime requirements will be installed by XConnect's Setup function.

IMPLEMENTATION

There are two key components to implementation. The first is the data, which is in XML format. The other is the format, which is pre-defined in XSLT style sheets.

All data returned to the clients are in XML format. ASP and XSLT programs are provided in the form of source code to expedite further customization.

The dynamic web pages use server-side Active Server Page (ASP) to accept the user input, retrieve data from the database, and format it into XML. Extensible Stylesheet Language Transformations (XSLT) formats data into web pages.

ASP pages display forms to input station names, sensor names, time ranges, etc. and submit. When the user clicks the submit button form data is sent to the server.

ASP pages generate proper SQL strings to retrieve data from the database. The data is returned in an ADO result set. Then ASP creates the XML object, stores the data in it, and then returns the data back to the user.

The browser shows the page in the preferred style.



SUTRON CORPORATION

22400 Davis Drive
GS-25F604D SBSA

Sterling, VA 20164
NESDIS Certified

(703) 406-2800
ISO Certified

(703) 406-2801 Fax
EUMETSAT Certified

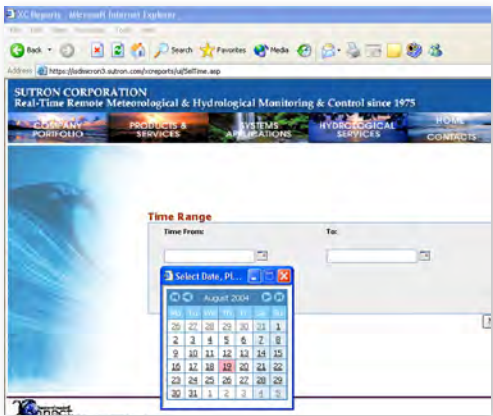
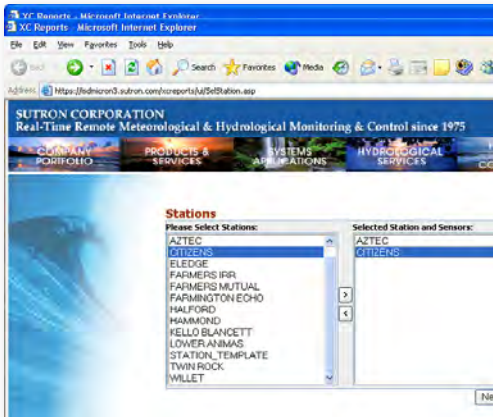
www.sutron.com
CE Certified

sales@sutron.com
INSAT Certified

page 5
4/7/2011

XConnect Software Reports

- ▶ Station List/Sensor List
- ▶ Last Reported Time for Stations
- ▶ Data for Selected Station
- ▶ Data for Today, Data for Yesterday, Data for the Last 5 Days
- ▶ Data for a Selected Station, Sensor and Time Range



System Data

9/5/2003 2:40:35PM

Station ID	Sensor Name	Time Tag	Source	Original Value	Edited Value
EVANS CREEK	BATTERY	9/5/2003 12:15:00AM	S	13.51	13.51
EVANS CREEK	BATTERY	9/5/2003 1:15:00AM	S	13.41	13.41
EVANS CREEK	BATTERY	9/5/2003 2:15:00AM	S	13.34	13.34
EVANS CREEK	BATTERY	9/5/2003 3:15:00AM	S	13.30	13.30
EVANS CREEK	BATTERY	9/5/2003 4:15:00AM	S	13.26	13.26
EVANS CREEK	BATTERY	9/5/2003 5:15:00AM	S	13.23	13.23
EVANS CREEK	BATTERY	9/5/2003 6:15:00AM	S	13.20	13.20

Stations Not Reporting Since 9/5/2003

9/5/2003 2:51:58PM

Station ID	Satellite ID	Unit ID	Basin	State
AMISTAD DAM				
ARROYO COLORADO A	0092B620	ARROYO COLORADO		
MIDDLE FORK SAN PE	0091A224	MIDDLE FORK SAN		
NORTH FORK SAN PE	009197BE	NORTH FORK SAN		
PINTO CREEK	009205D2	PINTO CREEK		
RIO GRANDE AT COLOM	00923048	RIO GRANDE AT C		
RIO GRANDE AT FORT Q	0090A0DE	RIO GRANDE AT F		
RIO GRANDE AT LARED	009246D8	RIO GRANDE AT L		
RIO GRANDE AT LOS E	009290B0	RIO GRANDE AT E		
RIO GRANDE AT BURL	00926376	RIO GRANDE AT B		

Last Reporting Times

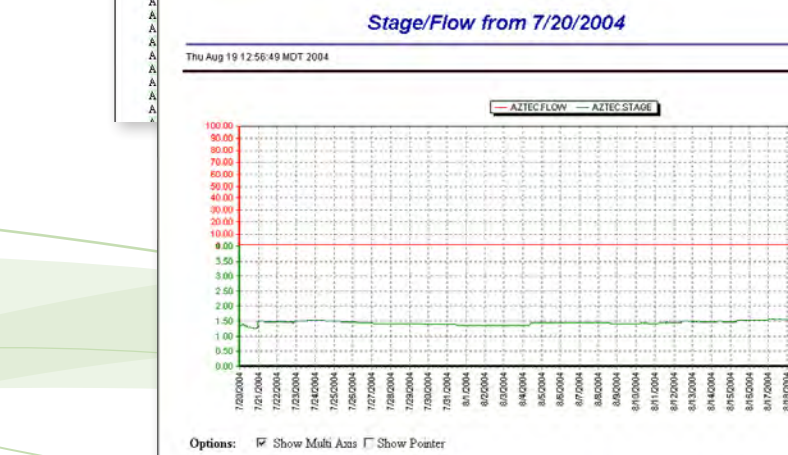
9/5/2003 3:05:05PM

Station ID	Satellite ID	Unit ID	Last Update
AMISTAD DAM			
ARROYO COLORADO A	0092B620	ARROYO COLORADO	
EVANS CREEK	0091B152	EVANS CREEK	9/5/2003 5:19:11PM
MIDDLE FORK SAN PE	0091A224	MIDDLE FORK SAN	
NORTH FORK SAN PE	009197BE	NORTH FORK SAN	
PINTO CREEK	009205D2	PINTO CREEK	9/4/2003 8:20:01PM
RIO GRANDE AT COLOM	00923048	RIO GRANDE AT C	

Daily Stage Statistics From 7/20/2004

Thu Aug 19 12:58:21 MDT 2004

Station ID	Time Tag	Count	Min ft	Avg ft	Max ft
AZTEC	7/20/2004	96	1.260	1.327	1.490
AZTEC	7/21/2004	96	1.480	1.485	1.490
AZTEC	7/22/2004	96	1.420	1.482	1.490
AZTEC	7/23/2004	96	1.490	1.504	1.530
AZTEC	7/24/2004	111	1.520	1.520	1.520
AZTEC	7/27/2004	49	1.410	1.420	1.480
AZTEC	7/28/2004	96	1.410	1.416	1.420
AZTEC	7/29/2004	96	1.400	1.408	1.420
AZTEC	7/30/2004	96	1.390	1.396	1.400
AZTEC	7/31/2004	71	1.380	1.386	1.390
AZTEC	8/3/2004	49	1.380	1.380	1.380
AZTEC	8/4/2004	96	1.370	1.421	1.450



SUTRON CORPORATION

22400 Davis Drive : Sterling, VA 20164 : (703) 406-2800 : (703) 406-2801 Fax : www.sutron.com : sales@sutron.com : page 6
 GS-25F604D SBSA : NESDIS Certified : ISO Certified : EUMETSAT Certified : CE Certified : INSAT Certified : 4/7/2011