

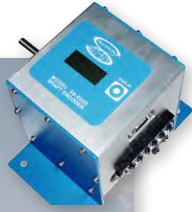
COMMONLY USED NOS-APPROVED TIDE STATION SENSORS



AQUATRAK® 4100 SERIES

Unique patented means of ratiometric time comparisons of sequential sonic/pressure pulses.

Environmentally protected within a small diameter tube. Designed specifically for continuous long term, unattended data acquisition. Aquatrak sensors have a field proven reliability record of better than 1,000,000 hours MTBF.



SDI (SERIAL DATA INTERFACE) INCREMENTAL SHAFT ENCODER

Scaleable pulses & frame of reference



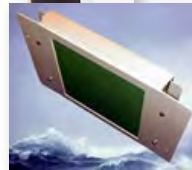
SHAFT ANGLE ENCODER

An "absolute" encoder that produces a fixed range of counts over a fixed number of revolutions.



PRESSURE TRANSDUCER

High-accuracy pressure sensor used in bubbler-based water level measurement systems



AIR GAP SENSOR (RADAR)

Radar-based water level sensor



GENERAL PURPOSE ANALOG DEVICE SDI BAROMETER



AIR TEMPERATURE/RELATIVE HUMIDITY SENSOR

Installed externally inside a shield



WATER TEMPERATURE SENSOR

In a suspended stainless steel tube



WIND SPEED & DIRECTION

Referred to as "wind birds", pulsed output for speed & internal potentiometer for direction



TIPPING BUCKET RAIN GAGE

Sensors are ordered separately.