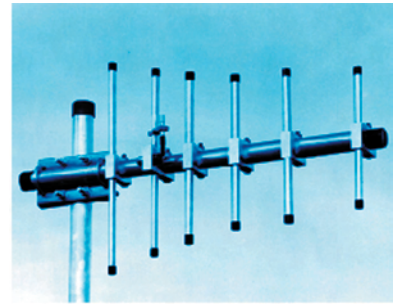


# YAGI UHF ANTENNA 5000-0030



## APPLICATIONS

- SCADA
- AGRIMET
- ANY MET STATION



## FEATURES

- Heavy duty construction
- Stainless steel hardware
- No tuning or cutting required
- High gain
- High wind survivability
- Preadjusted for broad frequency range
- Extremely rugged and weatherproof with heavy machined aluminum bosses holding six elements
- Stainless steel U-Bolts provided for mounting to standard 2-1/8 inch vertical pipe.
- Wide beamwidth creates easy station alignment
- High front to back ratio producing a clearer communication link

## HELPFUL HINTS

- Remember to perform link calculations that take into consideration transmitter wattage, cable loss, tower height, and distance between communication points to determine if the type of antenna selected and its gain are optimum for the system.
- Do not scrimp on inexpensive co-ax cabling between the transmitter and the antenna. Poor quality connectors, long cables, or poor quality cable will reduce the effective output at the antenna and may render the system inoperable.

## SPECIFICATIONS

Specifications subject to change without notice

Frequency	406-512 MHz (see below)
Gain	7.5 dBd
F/B ratio	25 dB
3 db Beamw. E-plane	53 degrees
3 db Beamw. H-plane	74 degrees
Connector	Type N Female
Wind Surf. Area	.41 Ft <sup>2</sup> (.038 m <sup>2</sup> )
Wind Survivability	125 mph (200 kph)
Weight	3.7 lb. (1.7 Kg)
Length	31 1/4 inches (79.4 cm)

## ORDERING

5000-0030-1	Antenna, UHF, 406 - 420MHz
5000-0030-2	Antenna, UHF, 450-470 MHz
5000-0030-3	Antenna, UHF, 470-490 MHz
5000-0030-4	Antenna, UHF, 490-512 MHz
ACCESSORIES	
6411-1162-1	Cable Assy, Antenna, 15 ft