



# DRGS INSTALLATION GUIDE



Prepared by:  
The Sutron Corporation  
21300 Ridgetop Circle  
Sterling, VA 20166

2009

# TABLE OF CONTENTS

1. Introduction.....	3
2. Connecting Equipment .....	4
3. Configure the DRGS PC .....	5

## 1. INTRODUCTION

DRGS Receiver site has two components: VCS Receiver and DRGS PC. The DRGS PC and receiver have already been configured and tested in Sutron before shipment. The network cable need to be connected properly and the DRGS PC IP address need to be changed to match the local network settings.

Please refer to the documents included on the VCS CD for more information.



## 2. CONNECTING EQUIPMENT

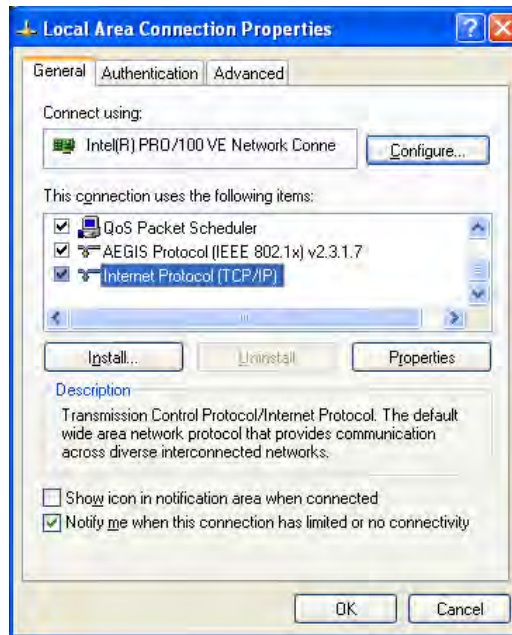
1. Mount VCS Receiver and DRGS PC on the rack (if applicable).
2. Connect the power cord to both boxes
3. Connect satellite antenna cable to receiver
4. Connect the cross-over cable included from the receiver to DRGS PC named as DRGS Private Connection. There are two network sockets on the back of DRGS PC. Please find the one labeled "Private DRGS" in network properties.
5. Connect local network cable to the other network socket. This is the one labeled "Local Network Connection" in network properties.
6. Connect a temporary keyboard, mouse and monitor to the DRGS PC. These can be removed once the server has been configured. A remote access is enabled on the DRGS PC.
7. Power on the VCS Receiver, then power on the Server PC.



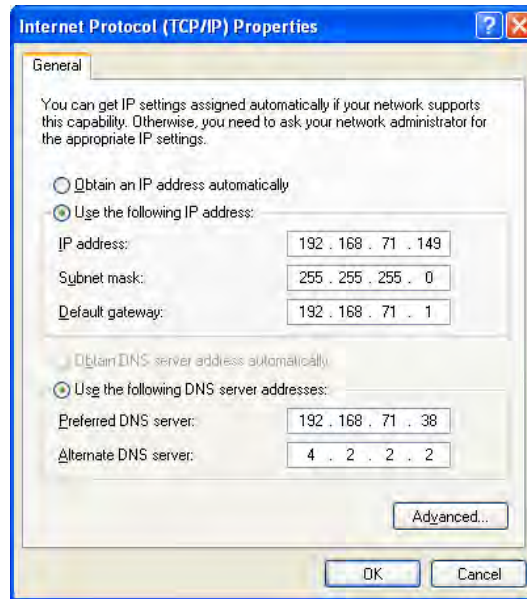
### 3. CONFIGURE THE DRGS PC

The DRGS PC has been configured, but the IP address needs to be changed to match your local network settings in order to install on your local network. Get a static IP address from the network administrator before starting.

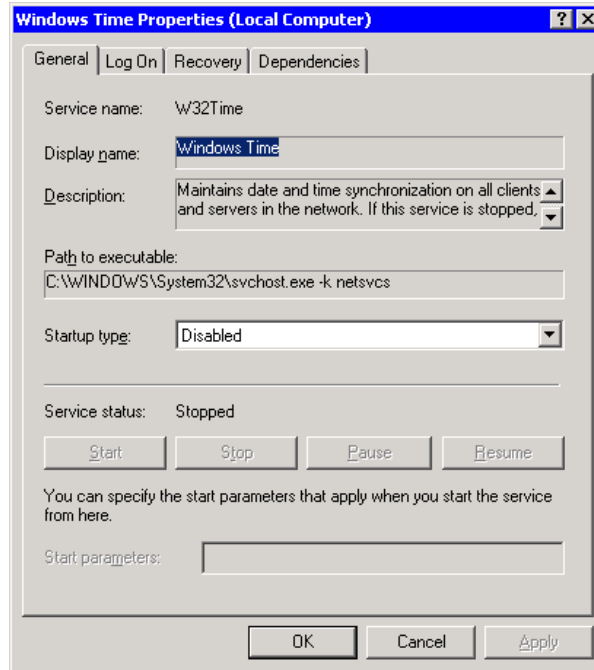
1. Right click on “My Network Places” on desktop and select Properties.
2. Right click on “Local Area Connection” and select Properties.



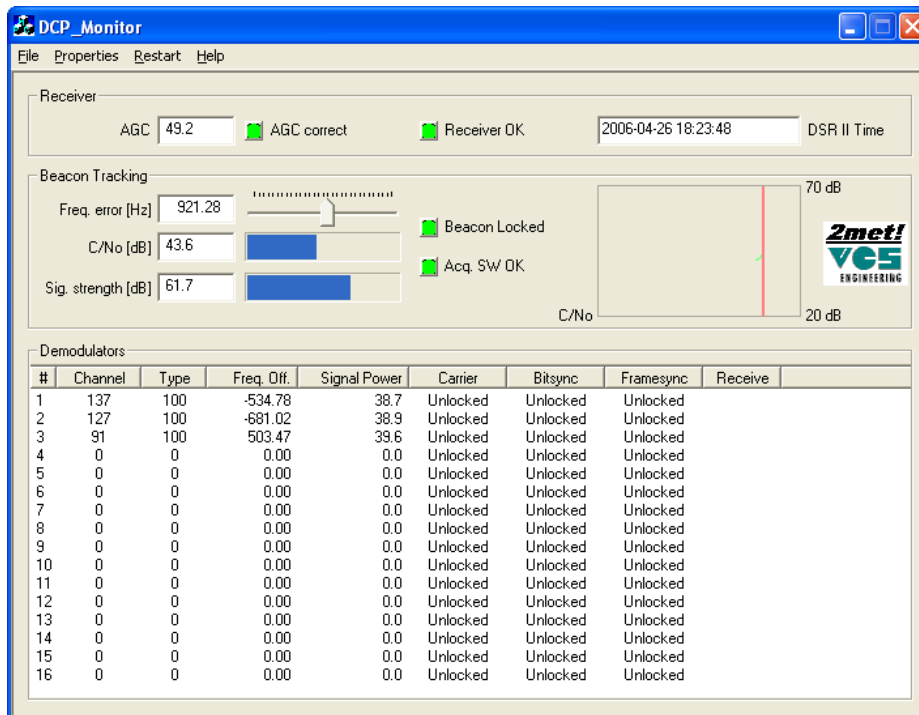
3. Select "Internet Protocol (TCP/IP)" and click Properties. If the PC has been connected into a Local Network an IP address is assigned automatically. You can change the IP address manually as supplied by the network administrator. A valid gateway and DNS are required.



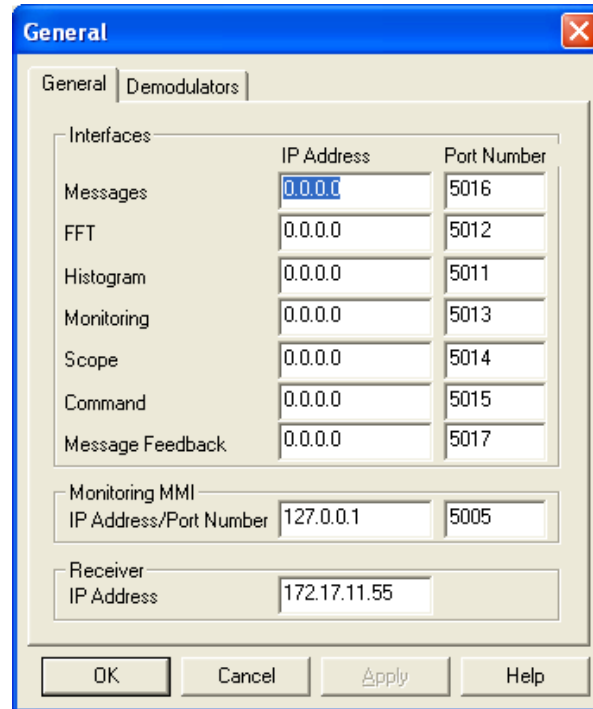
4. Click OK to close all network setting windows.
5. Configure the Time Server.
  - a. Install Nettime (<http://nettime.sourceforge.net/>)
  - b. Right click on NetTime tray icon on Windows task tray area. Click Settings and change the NTP servers to your network time server.
  - c. Open Windows Service Manager. Disable Windows Time Service.



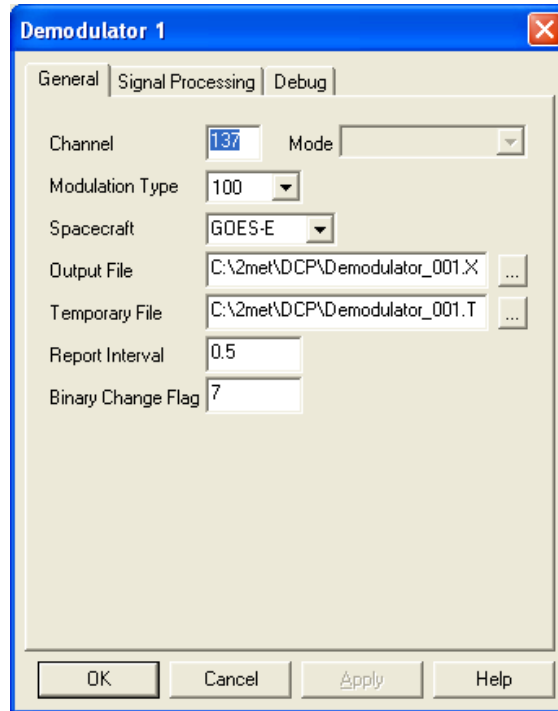
6. Open VCS Monitor from “Start” | “All Programs”.



7. Click Properties | General. DO NOT Change “**Interface IP Address**”, “**Monitoring IP Address**” or Port Number leave them as configured. Make sure that “Receiver IP Address” is the same as the IP address provided on the DSR11.



8. Change the channel settings by right click on channel and select Properties. Change Channel (e.g. 157); Modulation (e.g. 100)



9. Open XCDesktop from "Start" | "All Programs" | XConnect | XCDesktop. Select Satellite Systems from the left tree view and then select XCMux. Change the IP address to the server address.
10. Save all settings and close all programs. Reboot the server. This completes the configuration.