



APPLICATION NOTE

FIXED IP ADDRESSING ON 9210/XPERT DATA LOGGERS

i

SETTING A FIXED IP ADDRESS ON XPERT2 OR 9210B



APPLICATION NOTE

July 2008

Prepared by:

Integrated Systems Division

Copyright© 2008 Sutron Corporation

SUTRON

22400 DAVIS DRIVE
(703)406-2800

STERLING, VA 20164
(703)406-2801 FAX

WWW.SUTRON.COM
SALES@SUTRON.COM



APPLICATION NOTE

FIXED IP ADDRESSING ON 9210/XPRT DATA LOGGERS

TABLE OF CONTENTS

1. Overview.....	1
2. Configuration.....	1



1. Overview

This application note gives a step by step procedure on setting the Xpert/9210 loggers for a fixed IP address. Sometimes this is easier to communicate to the 9210 using this method. Some loggers do not operate on DHCP bootp Ethernet networks.

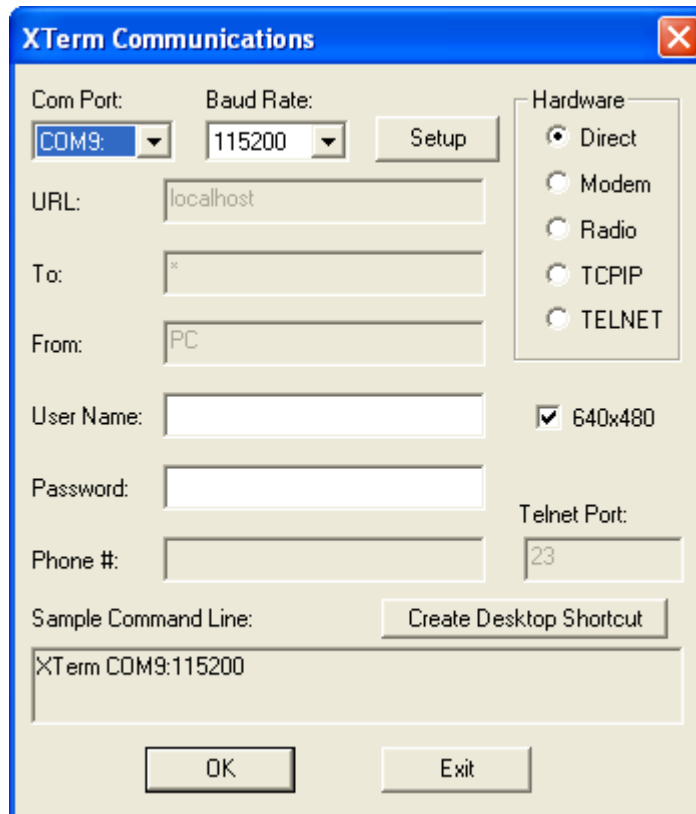
Along with the 9210 unit, you will require:

- ▶ a PC with XTerm installed.
- ▶ (2) Ethernet cables with RJ45 connector ends as normal for the PC and 9210.
- ▶ Assume operation with a 100 MB Ethernet switch with 2 ports available.
- ▶ DB9 serial cable for PC to 9210 COM1 direct connect.

2. Configuration

Connect the DB9 on COM1 XPert and PC com port. Next, connect the Ethernet cable(s) between 9210/XPert Ethernet port and the PC Ethernet port directly or via a Ethernet switch.

Start XTerm as normal to connect to the 9210 .

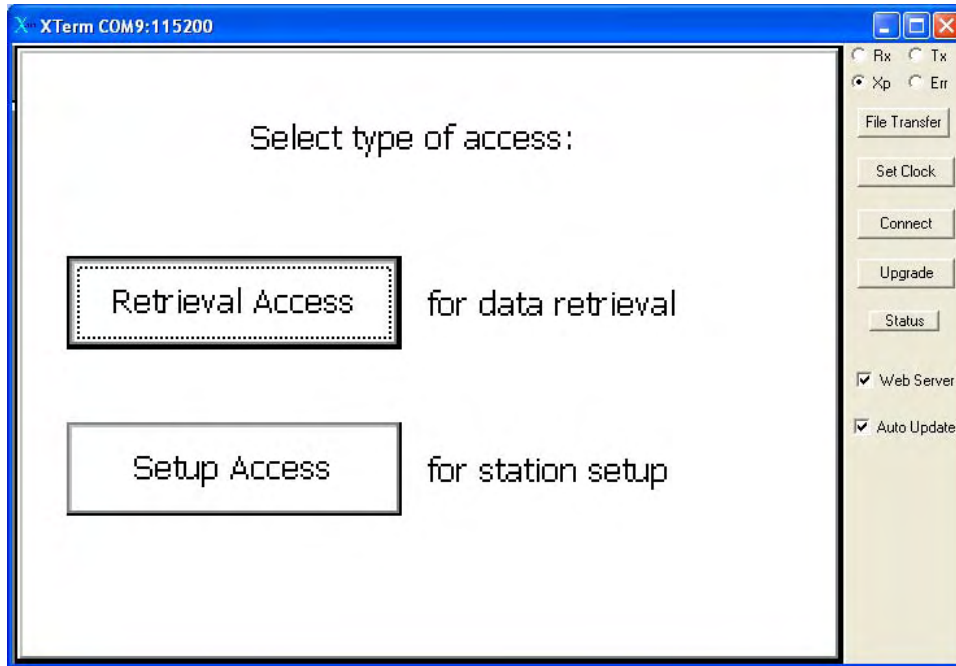




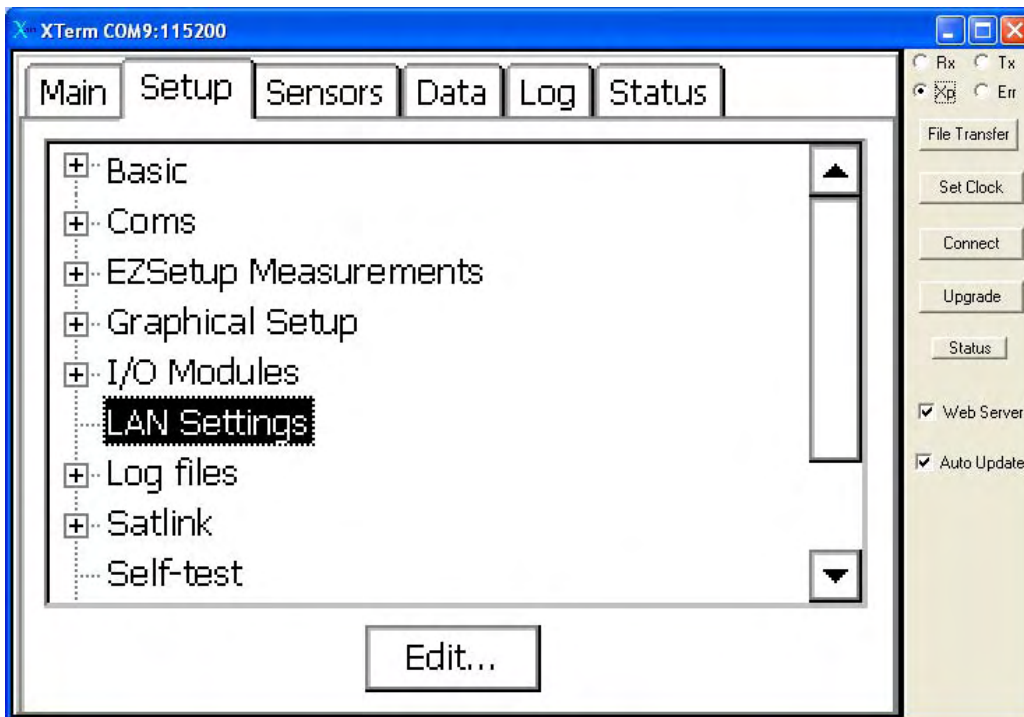
APPLICATION NOTE

FIXED IP ADDRESSING ON 9210/XPRT DATA LOGGERS

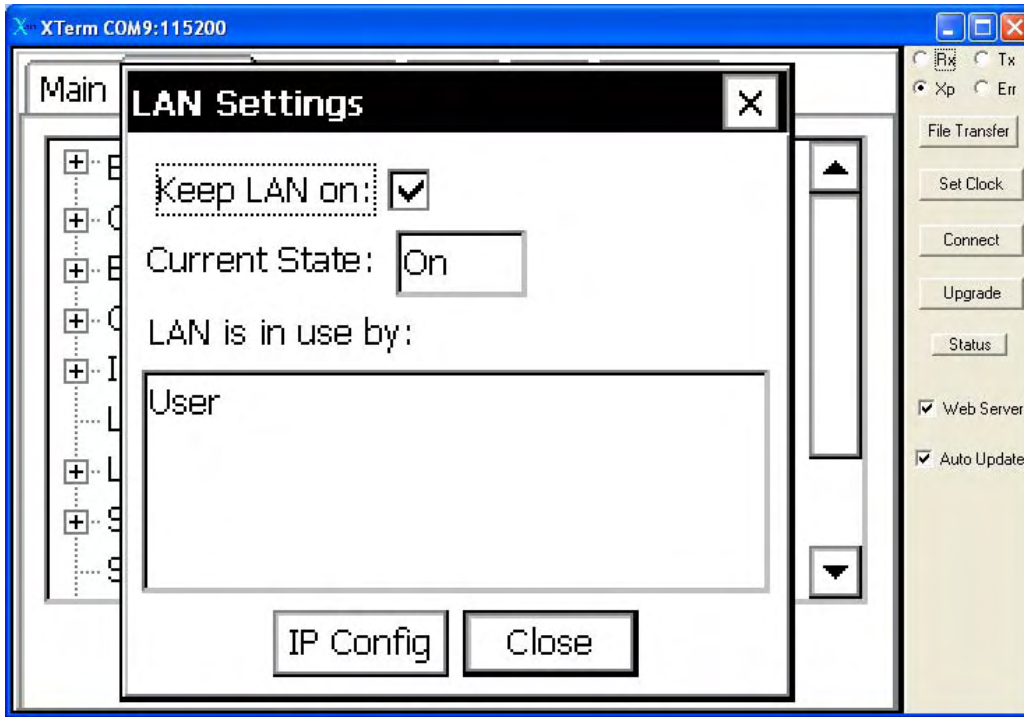
Click on SETUP Access



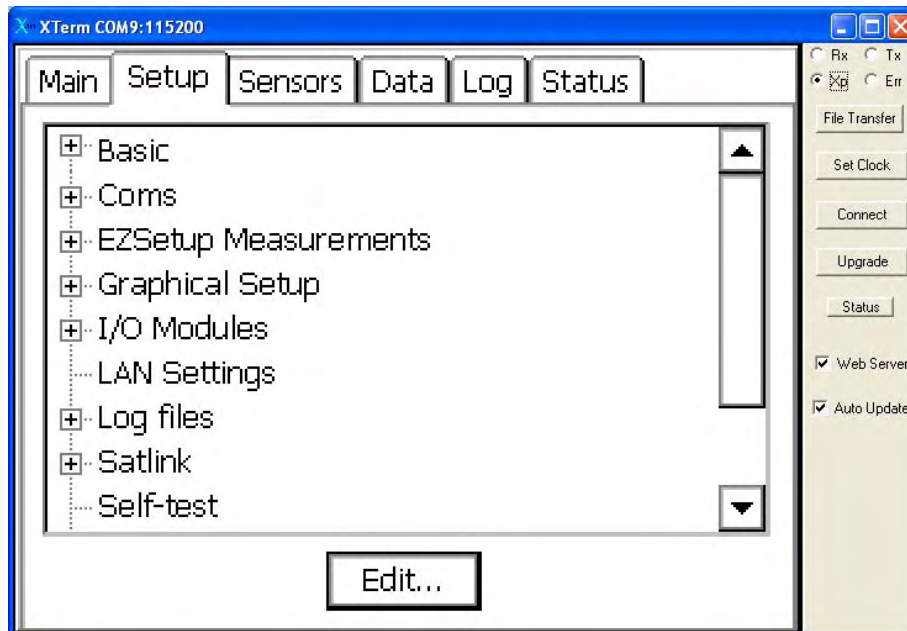
Click on LAN Settings edit button



Make sure the Keep LAN on: box is checked to make sure the hardware port is active



Click Close when finished.

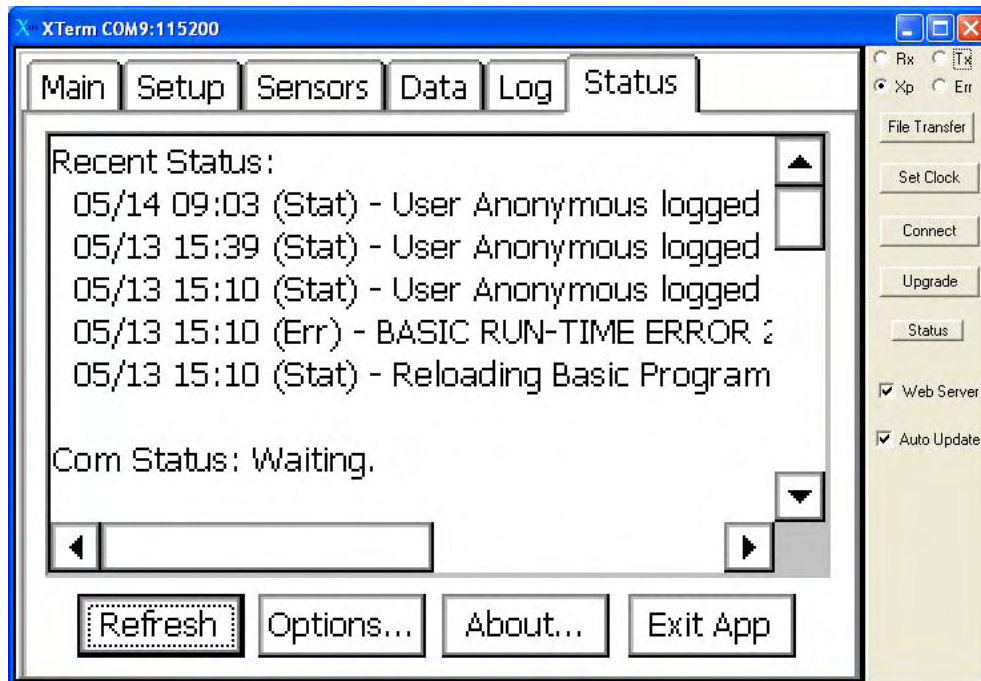




APPLICATION NOTE

FIXED IP ADDRESSING ON 9210/XPRT DATA LOGGERS

Click on the Status tab.



Click on Exit App button to CLOSE the Xpert.exe program on the 9210. Click YES when prompted to confirm. This is the next screen you should see now.

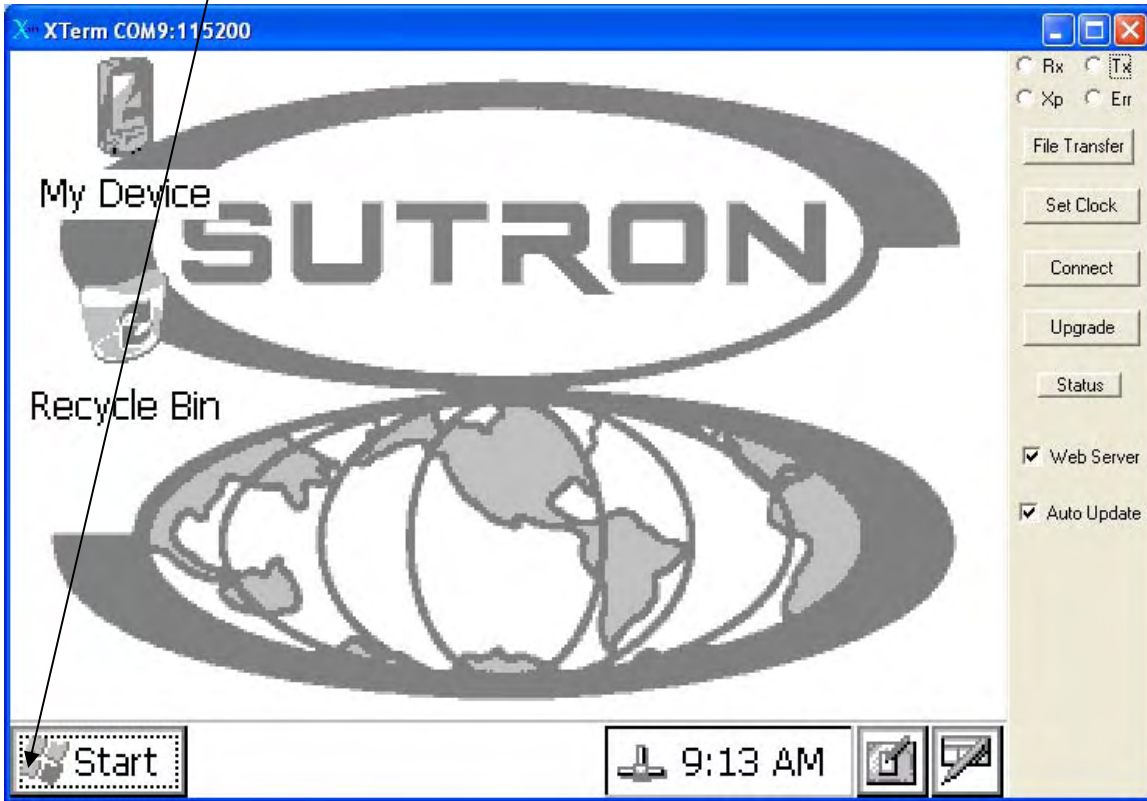




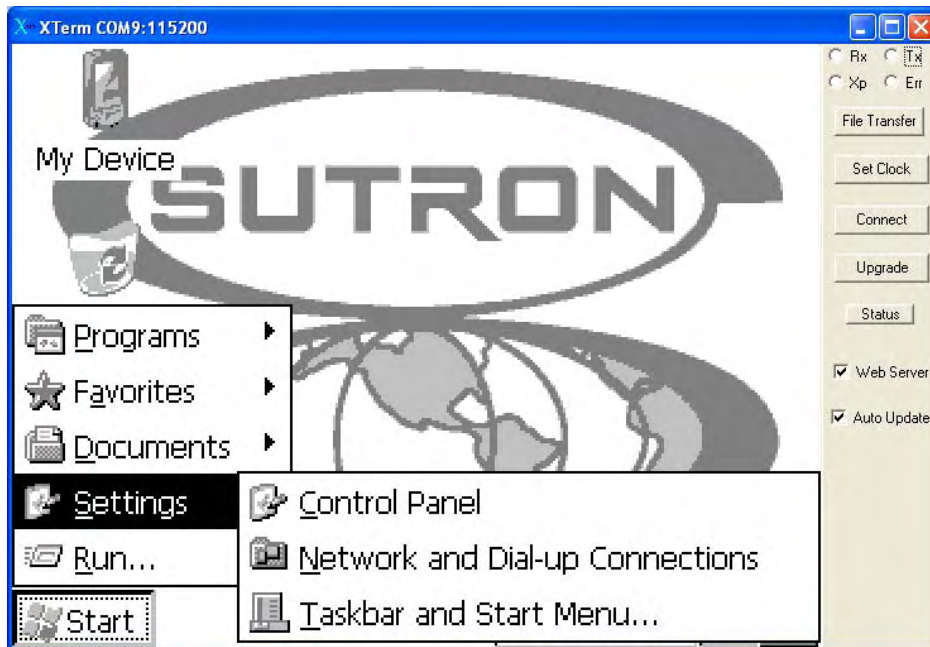
APPLICATION NOTE

FIXED IP ADDRESSING ON 9210/XPRT DATA LOGGERS

CLICK HERE with your mouse to get the Start button to appear on the lower left hand corner of the screen.



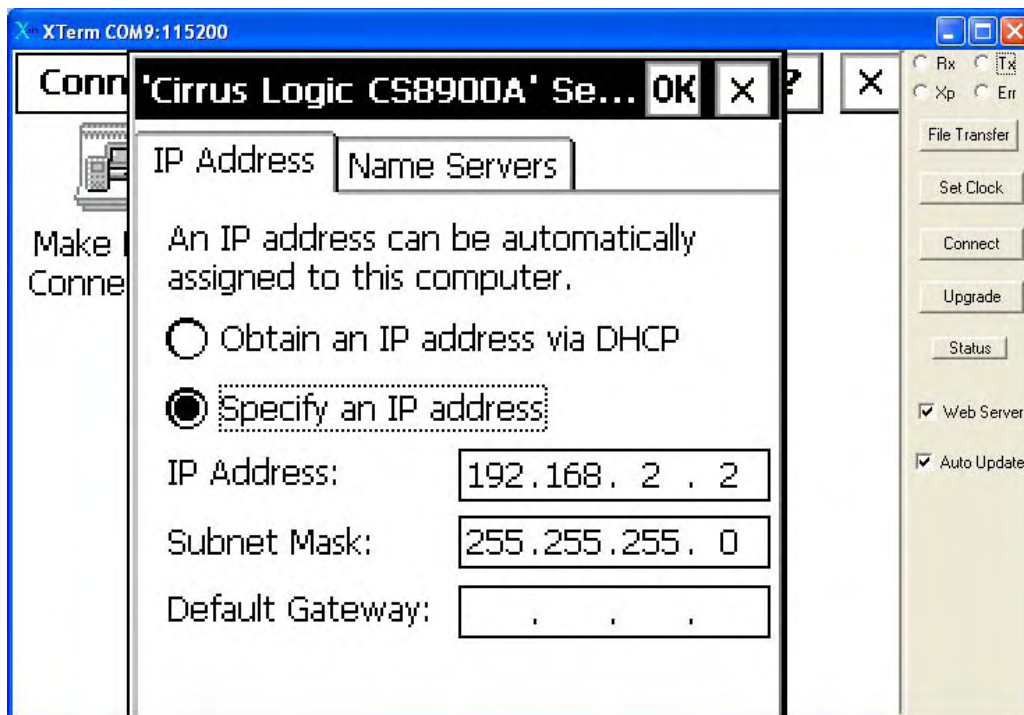
Click on Network and Dial-up Connections



Click on CS8900A1 ICON and select properties



Select the Specify IP address radio button and enter the fields as desired for this unit. Leave the Gateway entry blank. Click OK when done.

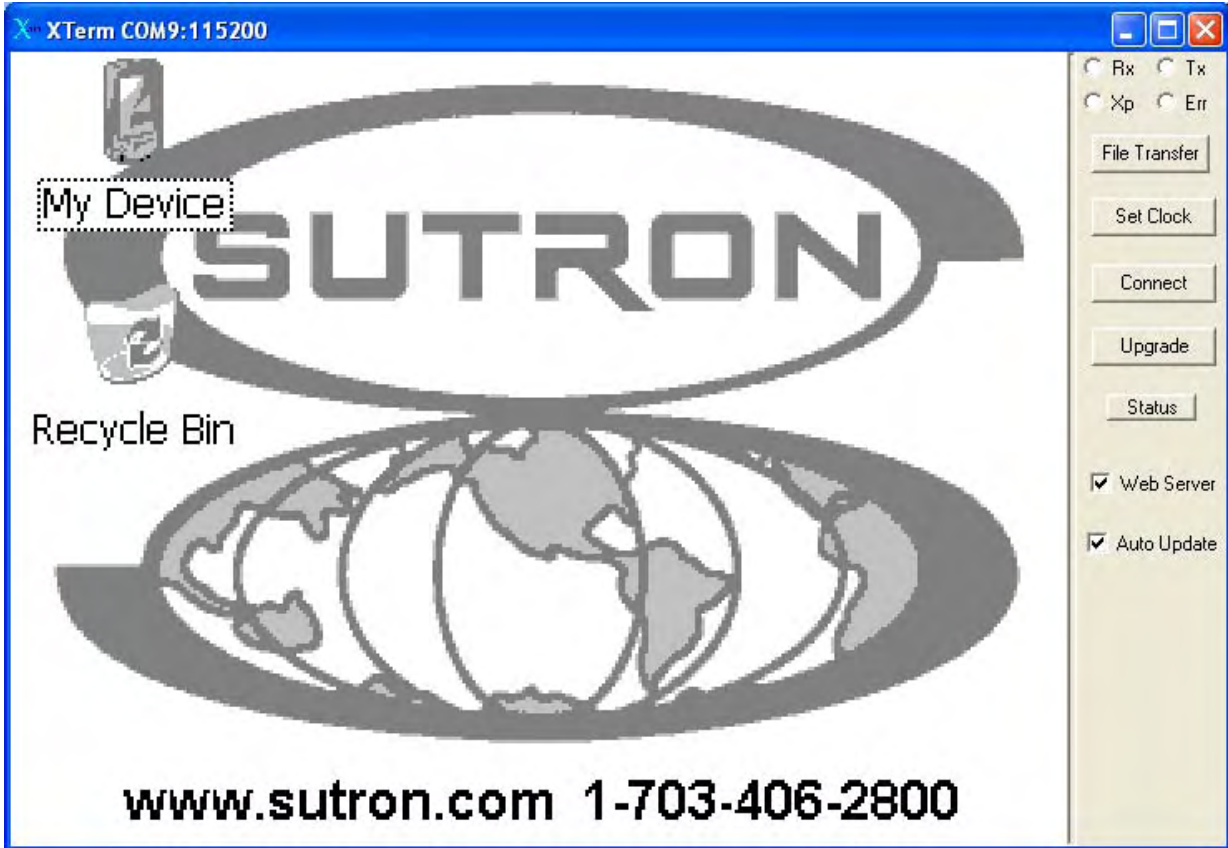




APPLICATION NOTE

FIXED IP ADDRESSING ON 9210/XPRT DATA LOGGERS

This is the screen you should see when the setup screen is closed. Close down XTerm as normal.





To verify, try a PING from the PC using the Command Prompt. In the PC, select Start|Programs|Accessories|Command Prompt. At the > prompt, type PING *ip address* and press enter. A reply should be received from the 9210 as shown below.

```
Command Prompt
Microsoft Windows XP [Version 5.1.2600]
(C) Copyright 1985-2001 Microsoft Corp.

C:\Documents and Settings\dmorgan>ping 192.168.2.2

Pinging 192.168.2.2 with 32 bytes of data:

Reply from 192.168.2.2: bytes=32 time=1ms TTL=128
Reply from 192.168.2.2: bytes=32 time=1ms TTL=128
Reply from 192.168.2.2: bytes=32 time=1ms TTL=128
Reply from 192.168.2.2: bytes=32 time=1ms TTL=128

Ping statistics for 192.168.2.2:
    Packets: Sent = 4, Received = 4, Lost = 0 (0% loss),
    Approximate round trip times in milli-seconds:
        Minimum = 1ms, Maximum = 1ms, Average = 1ms

C:\Documents and Settings\dmorgan>_
```

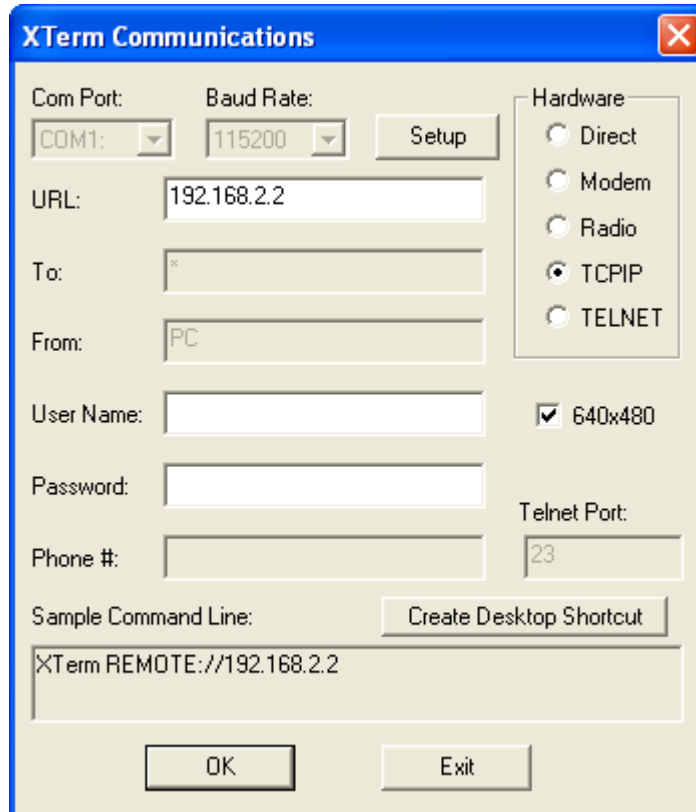
Next, reset the power to the 9210 unit. The AMBER light on the 9210 should stay ON. The GREEN light flickers with data coming in/out of the 9210 unit. Default speed is 10 MBs.



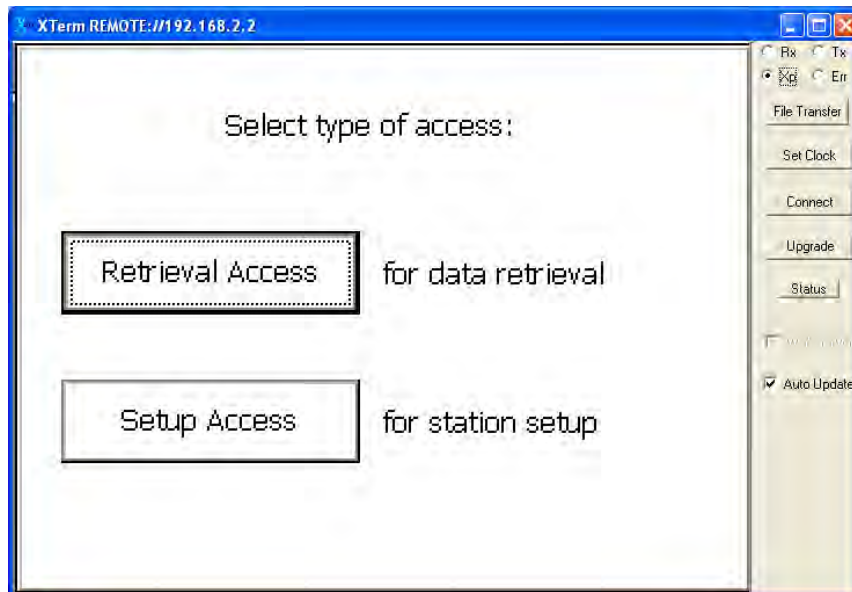
APPLICATION NOTE

FIXED IP ADDRESSING ON 9210/XPRT DATA LOGGERS

Restart XTerm, but click on TCPIP instead of Direct and enter the IP address as the URL parameter.



When OK is clicked, the opening screen will be shown using the Ethernet connection.





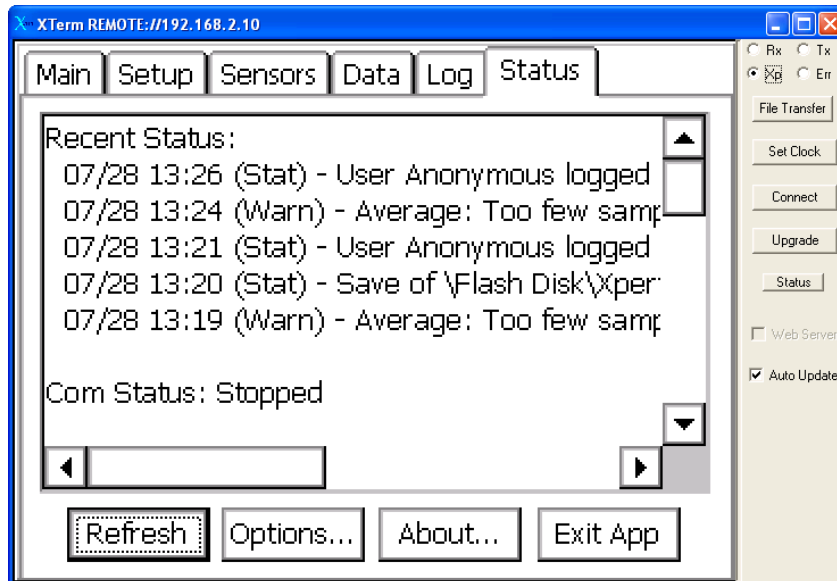
APPLICATION NOTE

FIXED IP ADDRESSING ON 9210/XPRT DATA LOGGERS

Now run the screens as normal for further operations.

Another example shows how to ping a PC from the 9210.

Click the status tab



Click Exit App just like before.



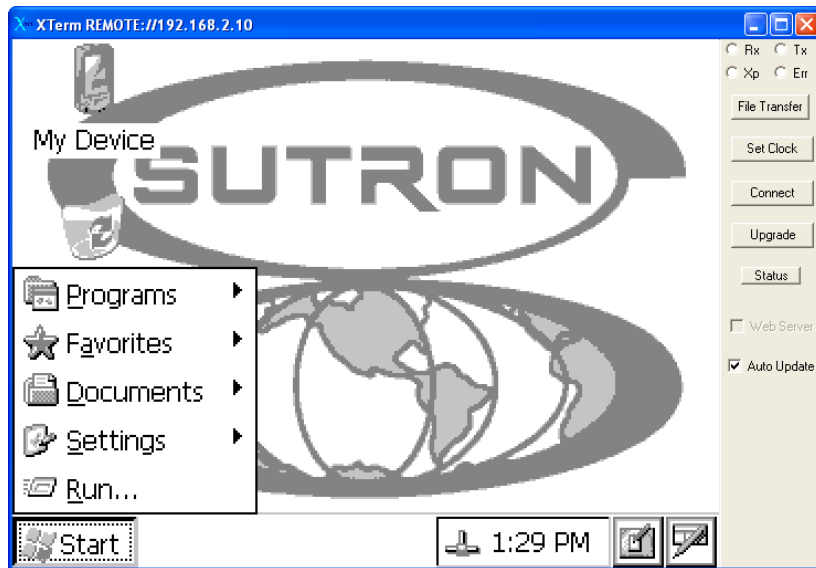


APPLICATION NOTE

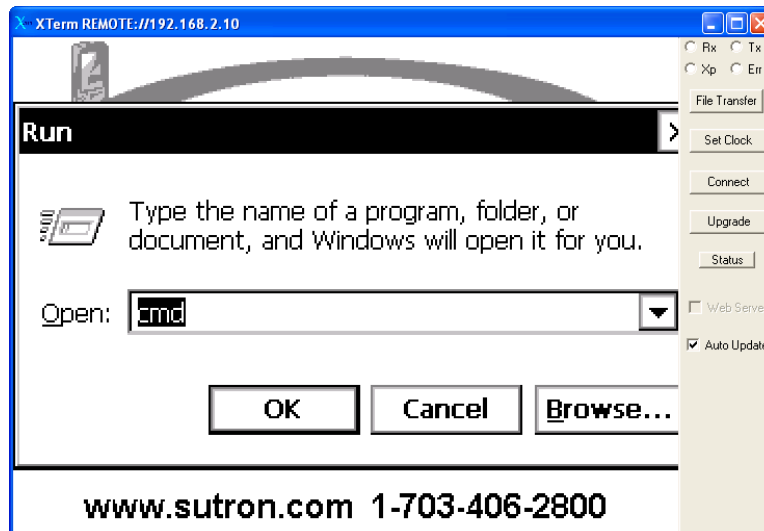
FIXED IP ADDRESSING ON 9210/XPRT DATA LOGGERS

This is the next screen

Click for the start button

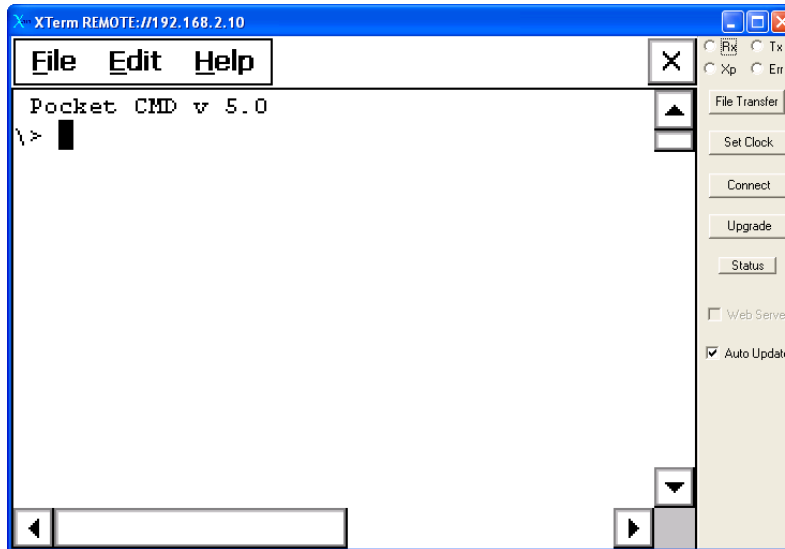


Now click RUN to get a prompt box and type cmd

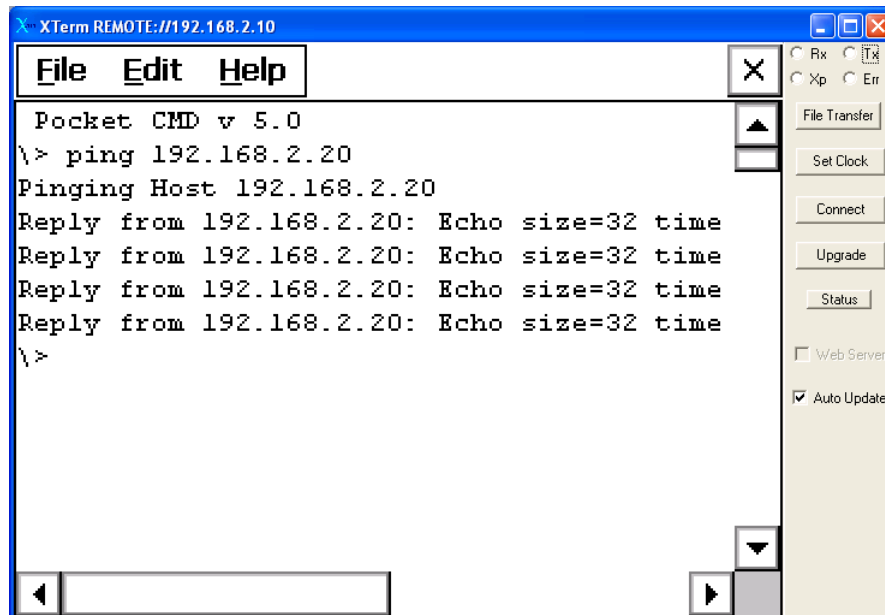




Click OK



Type the ping command with the PC address and hit enter.



With the 9210 connected you should see constant flicker on the GREEN LED.

NOTE: The 9210 address is 192.168.2.10 in this example. It was X.X.2.2 in the examples in the above screen captures. To get back to the 9210 running normal type \windows\xpert and hit enter.

After about 10 seconds the opening screen will be shown as normal.