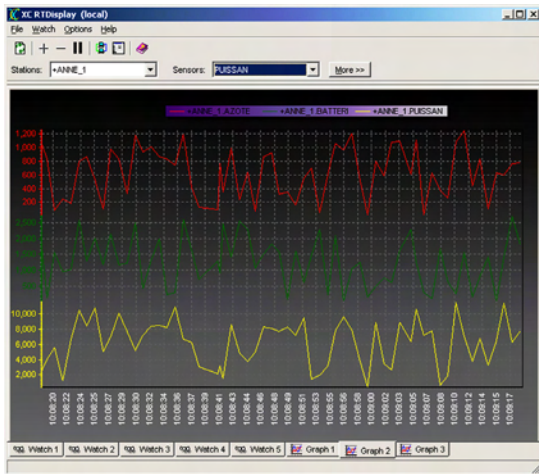


# XCONNECT SOFTWARE

## 9300-0000 DCP to Desktop



XConnect Real-Time Trend Display



REAL TIME DATA WHEN YOU NEED IT, WHERE YOU NEED IT, & IN YOUR SPECIFIED FORMAT!

Sutron specializes in collecting & delivering remote data in your specified format because it's not real-time if you have to wait to use it.

XConnect, the easiest way to put your real-time data in a relational database, is a powerful open data processing system with multiple storage options including Open Database Connectivity (ODBC).

Windows™ based, it handles all RTU communications with instant desktop supervisory control (SCADA) & data access.

REAL TIME ACCESS & CONTROL WITH...

- Standard HMI Compatibility with Intellution, Wonderware, Intouch® and National Instruments™ Lookout
- Open Database - ODBC & Standard SQL
- Data view, trending, editing, processing, storage & so much more.

## FEATURES

- Automated communications from PC server to RTUs
- Flexible, scalable relational database (i.e. Oracle®, Microsoft® Access)
- Real-time data processing (including table lookups) prior to data storage
- Flexible Time Tags - can be set to the second. No separate data files with odd time intervals (e.g., rainfall)
- Real-time error detection flags on data items.
- Quality Flags - Supports 2 alarm detection thresholds plus "no change" checks. Optional alarm for quality flag status.
- Multiple storage formats: PCBase2 Binary files, ODBC (Oracle®, Microsoft® Access), ASCII day files, and Microsoft® Excel, XML
- Communications diagnostics tools.
- Historical data tables with automated calculation & statistics storage - MIN, MAX, SUM, MEAN...
- Optional satellite message decoder module & utilities.
- Windows 2000 - Key modules implemented as automation servers w/future transition to Windows services.
- Allows 3rd party software link. DDE protocol maintained.
- New GUIs with enhanced tools and options.
- Crystal Reports Database Storage Reports Viewer
- Includes pre-defined time series and maintenance reports.
- Add reports of your own design to Reports Library.

SUTRON

# XCONNECT SOFTWARE

## 9300-0000



### SYSTEM FUNCTIONS

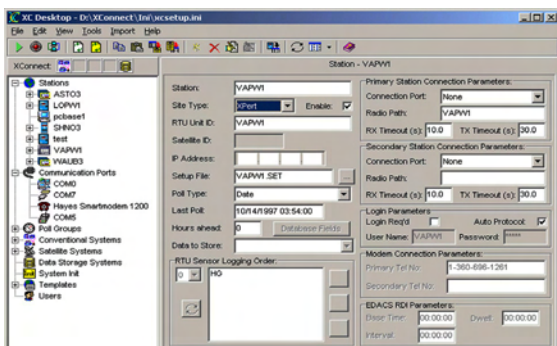
- Setup of stations, sensors, data groups
- Polling schedule (radio, phone systems)
- Real-time processing setup (tables, equations)
- Communications parameters
- Real-time status of data collection
- Interactive tools to aid in sensor configuration
- Interactive Graphics
- Access to database Station and Sensor Characteristics
- Standard Reports (hour, day, week, month, year)
- Post processing setup (optional)
- GOES decoding (optional)
- Data export (optional)

### SUTRON MANUFACTURES, DESIGNS,

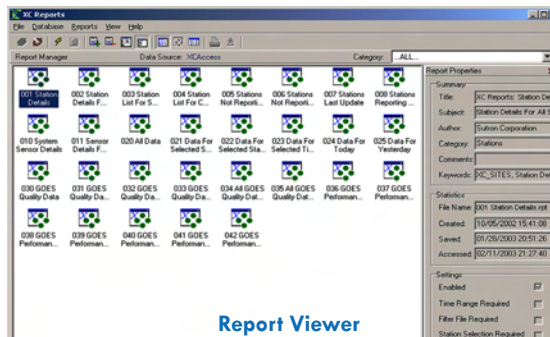
installs & operates many types of telemetry systems including Geostationary Satellite, Commercial Satellite, LOS Radio, Modem, and Ethernet Systems. XConnect is the solution to getting your data your way.

XConnect, a 4th generation hydro-met data collection engine, and its predecessors collect crucial operational data and provide

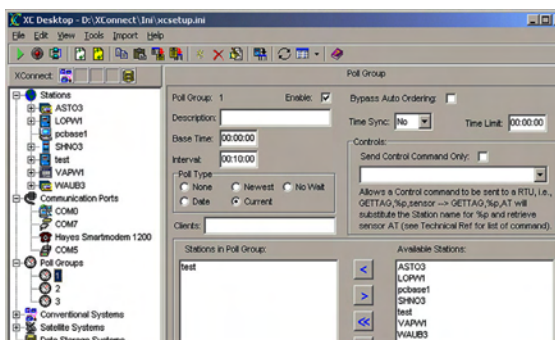
- Data collection,
- Real time calculations,
- Viewing and web posting tools.
- Its open database architecture and flexible export options make XConnect the perfect front-end data collection engine for any hydro-met modeling software.



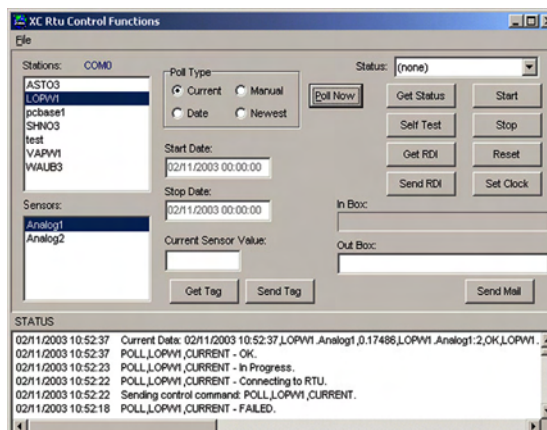
Main Setup Window



Report Viewer



Poll Group Setup Window



Real-Time RTU Control



# XCONNECT SOFTWARE OPTIONS

S  
U  
T  
R  
O  
N

## 9300-0000-1 XCONNECT STANDARD

Includes all modules needed to configure Sutron RTU station, sensor & module communications using hard-wire, dial-up telephone, cellular telephone, or LOS radio (SSP communications). Also includes standard data storage options (PCBase2 binary data files, ASCII log files, Excel).

- XC RTD (Real-Time Display)
- XC Setup
- XC Desktop
- XC Mux
- XC DataView
- XC Decode
- XC Test

## 9300-0001-1 XCONNECT SATELLITE

Configuration for communication via satellite with standard data storage options (PCBase2 binary data files, ASCII log files, Excel). XConnect Satellite is required for GOES, etc. satellite telemetry. Provides capability to spool files of incoming data from satellite or specialized data systems for further processing. Positional decoding capability provided allowing byte-wise & bit-wise positional parsing of spooled files & creation of input to normal telemetry routines.

- XC Setup
- XC DAPS
- XC Desktop
- XC RTD (Real-Time Display)
- XC Mux
- XC DataView
- XC Decode
- XC Test

## 9300-0000-2 STANDARD W/DATABASE OPTION

Includes additional modules for storage & access of data to a relational database (supports Oracle®, Microsoft® Access).

- XConnect Standard
- XC Reports w/Report Library
- XC PostProc

## 9300-0001-2 SATELLITE W/DATABASE OPTION

Includes additional modules for storage & access of data to a relational database.

- XConnect Satellite
- XC Reports w/XConnect Report Library
- XC PostProc

## 9300-0000-3 XCONNECT LITE

A compact version designed for small real-time systems with data storage limited to ASCII files and Excel files.

- XC Setup
- XC Desktop
- XC RTU
- XC RTD

## 9300-0002-1 XCONNECT UTILS

XConnect Utils is a collection of utilities to enhance XConnect. XConnect utilities will continue to evolve. XConnect Utils cannot be purchased alone. The user must minimally have XConnect Standard or XConnect Satellite.

- XC Alarm
- XC Export

## 9300-0000-4 XCONNECT UPGRADE KIT

XConnect Lite to XConnect Standard

## 9300-0000-5 PCBASE2 STANDARD UPGRADE KIT

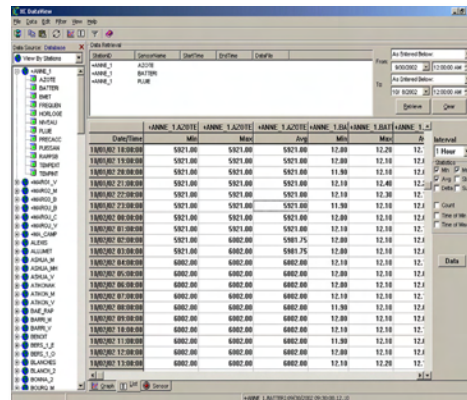
PCBase2 to XConnect Standard

## 9300-0000-6 PCBASE2 SATELLITE UPGRADE KIT

PCBase2 to XConnect Satellite

## 9300-0003-1 ANNUAL SUPPORT

Provides phone support and product upgrades



Tabular Real-Time Display

# XCONNECT DATA HOSTING

## OUTSOURCED DATA COLLECTION SERVICES



Not ready to implement a data collection network on your own?

Sutron can collect, decode, archive and deliver your data to you or post to the web; or install and operate your data collection network.

**Time Range**

Time From: [ ] To: [ ]

Select Date, PL...

August 2004

26	27	28	29	30	31	1
2	3	4	5	6	7	8
9	10	11	12	13	14	15
16	17	18	19	20	21	22
23	24	25	26	27	28	29
30	31	1	2	3	4	5

**Reports:**

ID	Name	Description
001	StationList	Station List
002	StageFlowForToday	Stage and Flow for Today
003	StageFlowForYesterday	Stage and Flow for Yesterday
004	StageFlowFor5Days	Stage and Flow for 5 Days
005	StageFlowFor30Days	Stage and Flow for 30 Days
006	StageFlowTimeRange	Stage and Flow for Selected Stations and Time Range
007	DailyStageForStation	Daily Stage Statistics for Station for 30 Days
008	DailyFlowForStation	Daily Flow Statistics for Station for 30 Days
009	Stage Flow Graph	Stage and Flow Graph for Selected Stations for 30 Days

**Stations**

Please Select Stations:

- AZTEC
- CITIZENS
- ELEDOE
- FARMERS IRR
- FARMERS MUTUAL
- FARMINGTON ECHO
- HALFORD
- HAMMOND
- HELLO BLANCKETT
- LOWER ANNAS
- STATION\_TEMPLATE
- TWIN ROCK
- WILLET

Selected Station and Sensors:

- AZTEC
- CITIZENS

**Daily Stage Statistics From 7/20/2004**

Thu Aug 19 12:58:21 MDT 2004

Station ID	Time Tag	Count	Min ft	Avg ft	Max ft
AZTEC	7/20/2004	96	1.200	1.327	1.490
AZTEC	7/21/2004	96	1.480	1.485	1.490
AZTEC	7/22/2004	96	1.420	1.422	1.490
AZTEC	7/23/2004	96	1.490	1.504	1.530
AZTEC	7/24/2004	11	1.520	1.520	1.520
AZTEC	7/27/2004	49	1.410	1.420	1.430
AZTEC	7/28/2004	96	1.410	1.416	1.420
AZTEC	7/29/2004	96	1.400	1.408	1.410
AZTEC	7/30/2004	96	1.390	1.396	1.400
AZTEC	7/31/2004	71	1.390	1.396	1.390
AZTEC	8/1/2004	49	1.380	1.380	1.380
AZTEC	8/4/2004	96	1.370	1.421	1.420
AZTEC	8/5/2004	96	1.440	1.441	1.420
AZTEC	8/6/2004	96	1.440	1.442	1.420
AZTEC	8/7/2004	96	1.440	1.453	1.460
AZTEC	8/8/2004	96	1.430	1.438	1.420
AZTEC	8/9/2004	96	1.430	1.438	1.430
AZTEC	8/10/2004	96	1.430	1.433	1.440
AZTEC	8/11/2004	96	1.430	1.442	1.500
AZTEC	8/12/2004	96	1.450	1.476	1.500
AZTEC	8/13/2004	96	1.480	1.483	1.490
AZTEC	8/14/2004	96	1.480	1.483	1.500
AZTEC	8/15/2004	96	1.480	1.510	1.530
AZTEC	8/16/2004	96	1.520	1.529	1.560
AZTEC	8/17/2004	96	1.560	1.570	1.580

**Stage/Flow from 7/20/2004**

Thu Aug 19 12:58:49 MDT 2004

AZTEC FLOW — AZTEC STAGE

Options:  Show Multi Axis  Show Pointer

Refresh Now